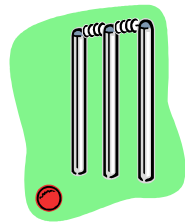


## VILLAGE BARBEQUE



Thank you to all of you who came to the joint Parish Council and Cricket Club BBQ on 22<sup>nd</sup> July. The weather held (just about!) and a good time was had by all. A big "thank you" to the cricket club for co-hosting the event and to Len Smith for all his hard work. It is hoped that this will become an annual gathering.

## DOGMERSFIELD CRICKET CLUB



The club has provided us with the following information: The Club runs two teams on a Saturday. The First Team plays in Division 1 of the L' Anson League and the Second Team in Division 3 (promoted last year from 4). The League has 5 divisions in total and we have been in it now for many years. It is the oldest, continuously operating League in the Country. Most games start at 2pm. Sunday fixtures are friendly games and include some local teams, such as Odiham, Hartley Wintney, Crondall etc. The Club runs two U11 teams, an U13 team and an U15 team. New players would be very welcome, although the season for them has now come to an end, because of school holidays. These teams usually play on Saturday and Sunday mornings, with a few midweek games. The Club also enters a local com-

petition called the Aylward Cup which is a 20 over per side evening competition, including some big clubs in the area, such as Finchampstead, Eversley, Hartley Wintney and Hook. We lost in the Final of this, two years ago.

The Club is 60 years old next year and we are always happy to welcome new members. Why not stroll down to the ground on a summer evening and enjoy a drink whilst watching a game of cricket in a lovely setting?

The current fixture list is displayed on the parish notice board.

## FOSTER & HEANES RE-DEVELOPMENT

As some of you may be aware, the owner of the Foster and Heanes garage site has applied for planning permission to knock down the current buildings and replace them with residential dwellings.

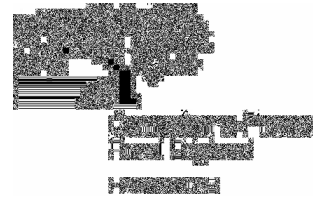
At present, permission to demolish the site has been granted on appeal, but plans to construct three new houses on the site have been refused (see application No's: 05/01376/FUL and 05/01378/CONAC on [www.hart.gov.uk](http://www.hart.gov.uk).)

The parish council has had a very constructive meeting with the owner of the site and we hope to maintain communication so that any future proposal for development is discussed, and some consensus reached, before the next planning application is presented to Hart.

## CAMPAIGN TO PROTECT RURAL ENGLAND (CPRE) (HAMPSHIRE BRANCH)

CPRE are currently campaigning against the developments at Hitches Lane and Queen Elizabeth Barracks. They have contributed the following article: Visiting or living in the countryside is a pleasure and a privilege, especially when the flowers and wildlife are in abundance. But we have to ask ourselves - how long will this last? Sadly, the answers are not clear as it is becoming increasingly

more difficult to protect our countryside from urban sprawl and unsightly developments.



Over the past 80 years, CPRE has been campaigning to protect the beauty, tranquillity and sense of character of the English countryside. We cover a wide range of aspects of the countryside from Rural Activities, Planning and Transport issues. CPRE is the only organization to campaign nationally, regionally and locally; as a result, we are a locally run charity with national clout.

CPRE Hampshire is a voice for everyone who wishes future generations to know the beauty of our countryside. If you would like to make this a reality, please lend your support as our strength is in our membership.

We are always in need of active volunteers and new members, so if you would like to help CPRE in any way, please contact Pam Mason on 01962 843655 or email [admin@cprehampshire.org.uk](mailto:admin@cprehampshire.org.uk)

## FUTURE PARISH COUNCIL MEETING DATES

**Parish Plan Social evening**  
Saturday 9<sup>th</sup> September 2006

**Parish Council meetings**  
Tuesday 12<sup>th</sup> September 2006  
Monday 30<sup>th</sup> October 2006

**PARISH COUNCILLORS**  
Alastair Clark :01252 615498  
[alastair@dogmersfieldparish.co.uk](mailto:alastair@dogmersfieldparish.co.uk)

Yvonne Beaven: 01252 614045  
[Yvonne@dogmersfieldparish.co.uk](mailto:Yvonne@dogmersfieldparish.co.uk)

Peter Curnow-Ford: 01256 701878  
[peter@dogmersfieldparish.co.uk](mailto:peter@dogmersfieldparish.co.uk)

Christine Lowe: 01252 811218  
[Christine@dogmersfieldparish.co.uk](mailto:Christine@dogmersfieldparish.co.uk)

Mike Ricketts: 01252 621083  
[mike@dogmersfieldparish.co.uk](mailto:mike@dogmersfieldparish.co.uk)

# Dogmersfield Newsletter

Edition 14

August 2006

## WELCOME



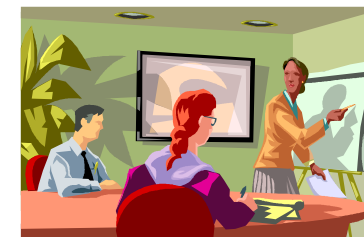
Welcome to the summer edition of the Dogmersfield Parish Newsletter. As ever we welcome your comments and feedback on our newsletter.

We hope to see as many of you as possible at our Parish Plan Consultation evening on 9<sup>th</sup> September. More information follows.

## PARISH PLAN CONSULTATION EVENING

We are hoping to deliver a copy of the final draft of the Parish Plan to all households in the parish during the month of August.

We will also be issuing an invitation to the consultation and social evening **which is being held at 7:00 pm on the 9<sup>th</sup> September at Winchfield Village hall.** We will be providing free refreshments in the form of a fork supper with wine and soft drinks



Almost 75% of residents responded to the questionnaire that we sent out two years ago. We are hoping that even more of you will come to the consultation to give us your feedback on the Plan and, at the same time, enjoy a social occasion.

## DOGMERSFIELD FLOWER SHOW

Brian Leversha, Chairman of the Dogmersfield, Winchfield and Crookham Village Horticultural Society writes:

The show was a great success with the entries up to around 400 which was about 80 more than other years - the entries were of a very high standard. All the exhibitors stated that they had had a very enjoyable afternoon and nearly all have pledged to come again next year

Kas Pakula, who lives in Chatter Alley, won the Banksian Medal.



The children's entries stood at 50 - again a record on previous years, thanks in many cases to the numerous entries from the school. Feedback has been very positive with so many people saying that it had been a super day.

We try to keep all the show as rural as possible so that it lives up to its "Darling Buds of May" image.

Next year's show will be on Saturday 14<sup>th</sup> July 2007.

## EXCESS ROAD SIGNAGE

On July the 18<sup>th</sup>, Parish Councillors met representatives from Hampshire Highways, to conduct a walk through the village, to see what rationalisation there could be on road signs. Highways understood our concerns that 'sign blight' was detrimental to the rural character of Dogmersfield. The final report and

action plan at the time of writing has not been finalised. We are confident that a number of redundant signs will be removed, and where possible, other signs consolidated on the same pole.



While the Parish Council would have preferred the removal of more signs, we were advised that those remaining were required by law.

The Parish Council also raised the issue of the poor condition of the pavement at the end of Chalky Lane. We were informed that at present there is no budget for these repairs. However the Parish Council will continue to press for this to be addressed.

Residents of Church Lane may be interested to know that the road may be re-surfaced either this September or next March. Highways are currently unable to advise how far past the Church this will extend, as the budget for this work has not been agreed.

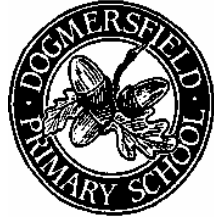
## MARQUEE APPLICATION AT DOGMERSFIELD PARK

During May an application was submitted by Dogmersfield Park Ltd for the temporary erection this year and next of a Marquee in the park for corporate entertainment.

This application is not related to the Four Seasons Hotel (owned and run by a separate company) which occupies its own area within the historic park.

Subsequent to this, following submissions from both the public and the Parish Council, the application was turned down by Hart District Council.

## DOGMERSFIELD PRIMARY SCHOOL



The Head teacher, Miss Susan Wall, writes:

"We have had a particularly busy year at Dogmersfield Primary School and I think all the staff, children and governors are looking forward to a well earned rest.

Helping others is a big part of our life at Dogmersfield and this year money has been raised for Children in Need, Shelter, the children's hospice movement and Barnados.

We had our long-anticipated OFSTED inspection in December (in the middle of one of the busiest times of the school year!). It was a great success, classifying Dogmersfield as a "good school. Spiritual, moral, social and cultural development was all-good. Pupils work together very well. The school's moral code is strongly based upon its Christian ethos and pupils are very aware of the importance of their responsibilities as well as their rights".

January proved an important month for us, with the news from the diocese that our proposed school hall would be in the next round of diocesan funding.

Our DOSH (Dogmersfield School Hall) committee and the DSA now have a real purpose for their fund-raising, with 50k being the target.

An Easter raffle was planned, followed by various activities - from a child's father being sponsored to run the Fleet half marathon to a mufti day for the children.

Summer brings SAT's (Standard Assessment Tests) but also warm days and visits out.

We are already looking forward to September and have had many

enquiries for admission to Dogmersfield in September 2007.

If anyone has a child due to start school in September 2007 and would like to visit us please phone the school office on 01252 616345 to make an appointment."

## THE LAY-BY ON THE A287 ODIHAM TO FARNHAM ROAD

In the previous newsletter the Parish Council reported that a working party had been established to address concerns raised about anti-social behaviour in the lay-by on the A287.

The working party identified many issues regarding the anti-social behaviour as well as fly-tipping, traffic noise and safety around the whole area.

The Parish Council held a meeting with Hampshire Highways, our District and County Councillors and Hampshire Police. These concerns were discussed and a potential action plan was formulated.

In the past 2 months, after an exchange of communication, the Parish Council has responded in writing to Highways requesting definitive action be taken, including the possible closure of the lay-by, and a timescale for that action.

We hope that by the next newsletter we will be able to report on some positive progress.

In the meantime if you do see anything untoward in the area of the lay-by, the local Police have asked that you contact them as soon as possible.

## HART DISTRICT COUNCIL RECYCLING

Hart District Council is changing the way it collects your waste.



From the autumn, your non-recyclable household waste will be collected one week and your recyclable waste the following week. You can order a larger blue recycling bin by ringing 01252 774477

### WHAT CAN GO IN THE BLUE BIN?

ALUMINIUM: all aluminium drinks cans.

PLASTIC BOTTLES: bleach and household cleaners

Drinks bottles (squash, water, milk etc)

Detergent and shampoo bottles

PAPER: All newspapers and magazines

Leaflets, birthday cards, old files

All white telephone directories

All junk mail and home office paper

STEEL TINS: All food and beverage cans (including pet food)

CARDBOARD: Cardboard from packaging e.g., cereal food packets, frozen food boxes, tissue boxes toilet rolls.

Corrugated cardboard boxes.

### WHAT SHOULD NOT GO IN THE BLUE BIN?



YOGHURT POTS: Margarine tubs, cling film and other types of plastic  
TETRA CARTONS: Milk and juice.  
PLASTIC CARRIER BAGS:

SHREDED PAPER:  
BOTTLE TOPS: Plastic or metal.  
WRAPPING PAPER

## DOGMERSFIELD PRIMARY SCHOOL HALL



Dogmersfield School is one of only five schools in Hampshire which does not have a hall,

The diocese has now approved funding for a new school hall and provisional plans were presented to the Parish Council at the meeting in June for discussion. More detailed plans will be sent to Hart District Council and the Parish Council for approval later in the year. The diocese will provide only 90% of the funding, and the school will have to provide up to £50,000 depending on the final cost. So far, DoSH (Dogmersfield School Hall) committee has raised £30,000 through donations and fund raising events.

## PLANNING APPLICATIONS



The Parish Council would like to encourage all householders who are intending to submit planning applications to consider discussing their proposals with the Parish Planning group BEFORE submitting the application to Hart District Council.

Informal discussions with the PC can provide valuable help in ascertaining what may, or may not, be allowed by the planning authorities. It is hoped that preliminary consultation will help to pre-empt subsequent difficulties.

Applications can be discussed during the public participation session which precedes all Parish Council meetings, or by appointment with the Planning Group. Please contact the parish clerk for details.

## ALL SAINTS CHURCH

Visitors to All Saints' Church will find their access from the Dower House field up to the church much easier from now on. A very generous donation was recently received from Mrs. Olivia Hoare, the widow of Michael Hoare who was the previous owner of the Dower House, PCC treasurer and a great benefactor to All Saints'. The unsightly gap left by the removal of the dead tree on the North West perimeter of the Churchyard has been landscaped by a local company and the work included a wheelchair-friendly gravel path up to the West door. This helps us to comply with the Disability Discrimination Act, which applies to the Church as a public building.

Another long term project at All Saints' has finally been completed, again thanks to the generosity of Mrs. Olivia Hoare. A beautiful stained glass window in the West end of the Church was hidden from sight when the organ was built into the tower. This lovely window has now been restored and moved to the North nave, above the organ console, where it can be seen in its full glory.

**The annual Dogmersfield Church Harvest Supper will be held in Winchfield Village Hall on Saturday 14<sup>th</sup> October at 7.00 PM.**

There will be a family fun quiz; raffle and excellent hot and cold food (please bring your own drinks). Tickets are still only £7.50 each and available now from Joyce Stace (620761) or Amanda Ross (617391)



A traditional Family Harvest Festival Service will take place on Sunday 15<sup>th</sup> October at 10.30 AM.

The Friends of All Saints' Dogmersfield will hold a 60's Night in the Victoria Hall in Hartley Wintney on Saturday November 4<sup>th</sup>. There will be an excellent live band, cash bar, dancing and supper provided. 60's dress is optional... Tickets are on sale now from Sarah Groombridge (617005) at £17.50 each.

Church times and services are displayed in the church porch and on the Parish Notice boards.

## FARNBOROUGH AIRPORT



A number of people wrote to object about the proposed increase in weekend flying from Farnborough Airport. We were delighted to report that the application by TAG Aviation (owners of the airport) was refused by Rushmoor Borough Council, and at present no increase in weekend flights will be permitted.